

**On-Premises
Soft Mount Washer-Extractors**

UniMac

- 35 lb. (16 kg) Washer-Extractor**
- 50 lb. (23 kg) Washer-Extractor**
- 85 lb. (39 kg) Washer-Extractor**
- 135 lb. (61 kg) Washer-Extractor**
- 250 lb. (113.4 kg) Washer-Extractor**



Expert Solutions from the Laundry Experts

UniMac

Take a moment and step into the world of high tech product engineering where UniMac washer-extractors are designed with innovative features that command top performance, and durable steel construction that will stand the test of time. At UniMac, washer-extractors are considered more than just laundry equipment. They are key players in the success of commercial laundry facilities and as such must continuously achieve high levels of efficiency, quality and durability. UniMac has always maintained a standard of excellence in washer-extractor manufacturing that is recognized around the world. With over 50 years of engineering expertise you can be assured that you are getting the best washer-extractors on the market that will meet your needs now and in the future.

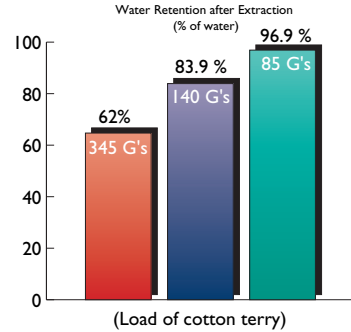
High Speed Extract

The higher the G-force during extraction, the lower the water retention of the fabrics being processed. 300+ G-force will reduce the gas or electricity used

during the drying process by as much as

30-40% over 90 G-force extract washers.

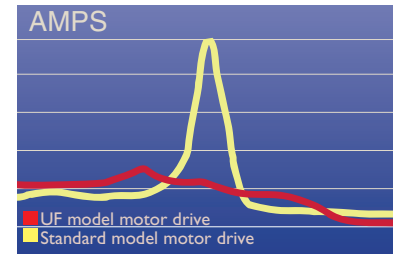
This results in reduced drying and finishing time, reduced linting and extended linen life. High speed extraction can also eliminate preconditioning of items to be ironed, saving energy while increasing production.



Programmable Speeds and Frequency Drive

Using UniMac's state of the art frequency drive provides flexibility and contributes to low operating costs. Separate extraction speeds for blends (85 G-force), blankets and spreads (140 G-force) or heavy

cotton towels (300+ G-force) are like having a custom designed machine for each linen type. Combine this flexibility with energy savings from the variable frequency drive to get the most from your investment. The red line of the diagram demonstrates a UniMac washer-extractor entering the extract step with a gradual ramping of amperage. The yellow line represents the inrush current of a standard motor which may require six times the normal running current to accelerate to extract speed. UniMac's variable speed frequency drive motor may reduce power costs by up to 40%.



Liquid Supply Signals and Connections

All UniMac UF models include eight supply signals and connections for a central liquid supply system which is factory-installed for easy on-site hookup. Five flush-down compartments with removable trays are standard on the UF models for powder supplies. All supplies are mixed with water and dispensed below water level, protecting and extending linen life and vital machine components.

(Supply dispenser side-mounted on UF 135.)



Microprocessor Control

UniMac's state-of-the-art microprocessor control provides all of the features you need to make your laundry room operate efficiently. It offers you a total of 39 factory programmed cycles, any of which can be modified, giving you the flexibility to customize your

on-premises laundry to meet specific needs.

As an added benefit, UniMac's step-by-step LED instructions provide for overall ease of operation and programming.

The microprocessor can also be programmed for an overnight soak which assists in stain removal. It can also be programmed for precise temperature controlled fills, and thermo cool-down allowing complete control of wash bath temperature for optimal chemical performance, wrinkle control and longer linen life.



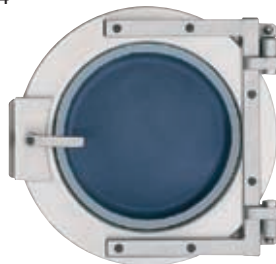
Water Saver System

All UniMac UF models have capability built into the microcomputer control to operate Water Saver Systems. These systems can save 30-40% of annual water consumption and could help prevent your washer-extractor investment from becoming obsolete by future regulations or operational cost considerations. The Water Saver System is self-contained as an optional feature that can be factory-installed.



Stainless Steel Construction

The UF washer-extractors use type 304 corrosion resistant stainless steel on the cabinet front, top, sides as well as inner and outer tubs and door. The stainless steel won't corrode, chip crack or pit with normal use and it keeps your investment looking good for the life of the machine.



Large Loading Door

UniMac's large door opening makes loading and unloading fast and easy. Our heavy-duty stainless steel door features vacuum tight sealing to keep water inside the machine where it belongs.

Overflow Rinse

The overflow rinse skims the soils and solids off the top of rinse water to keep soils and solids from draining through the linen.

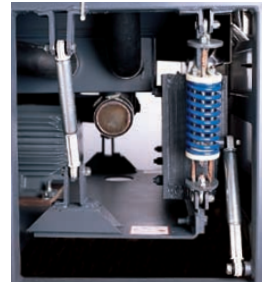
Direct V-Belt Drive

Designed to provide high efficiency and dependability, UniMac's direct V-belt drive offers quiet, smooth washer operation. UniMac has eliminated unnecessary transmissions and clutches to simplify the drive system and a single motor means fewer moving parts. Fewer parts means less maintenance and less wear.



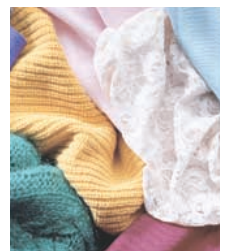
Tuned Suspension

Heavy-duty coil springs and carefully matched shock absorbers result in a tuned suspension system that absorbs even severe out-of-balance load vibrations. The tuned suspension on UniMac softmount models doesn't require bolt-down. Strategically placed center of gravity and mass weight placement aid in controlling movement and results in a 90% reduction of force transferred to floor.



Ultrasoft Wash Standard

For those extra delicate fabrics such as bedspreads or hand washable items, select an optional half speed wash to protect against fiber damage. This option includes two wash speeds, seven wash actions, and eight supply signals. (PV models only.)



- Large Water Inlet Valves operate independently for precise control, greater versatility for temperature-controlled fill, thermal cool down, and shorter cycle times.
- Steam or Electric Auxiliary Heating are optional.

Five-Year Limited Parts Warranty

A five-year limited warranty is issued on the frame, basket, shaft, bearings and seals if failure or breakage should occur during normal operation due to defects in material or workmanship that would prohibit its further use. A three-year warranty is also issued to the original purchaser on all other parts. Labor not included.



Specifications

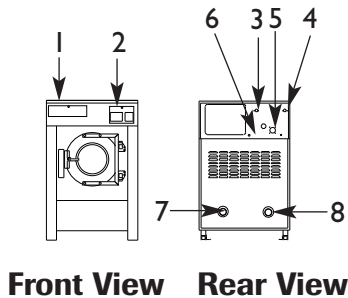
UF Models	UF 35	UF 50	UF 85	UF 135	UF 250
Dry Weight Capacity	35 lb. (16 kg)	50 lb. (23 kg)	85 lb. (39 kg)	135 lb. (61 kg)	250 lb. (113.4 kg)
Cylinder Size Diameter x Depth (in./mm)	26-1/4" x 18-3/8" (668 mm x 467 mm)	30" x 20" (762 mm x 508 mm)	36" x 24" (914 mm x 610 mm)	43" x 25" (1092 mm x 635 mm)	52" x 32" (1321 mm x 813 mm)
Cylinder Volume	5.79 cu. ft. (164 liters)	8.19 cu. ft. (232 liters)	14.1 cu. ft. (400 liters)	21 cu. ft. (596 liters)	39.3 cu. ft. (1114 liters)
Width (in./mm)	35" (889 mm)	39" (990 mm)	46-1/2" (1181 mm)	71" (1803 mm)	77.06" (1957 mm)
Depth (in./mm)	39" (992 mm)	42-1/2" (1080 mm)	50" (1270 mm)	62" (1575 mm)	88" (2235 mm)
Height (in./mm)	55.4" (1408 mm)	59.4" (1510 mm)	70.1" (1781 mm)	75" (1905 mm)	82" (2083 mm)
Motor Size	3 HP (2.24 kW)	5 HP (3.7 kW)	7.5 HP (5.6 kW)	10 HP (7.5 kW)	25 HP (18.5 kW)
Gentle Wash Speed	26 RPM	26 RPM	26 RPM	26 RPM	
Wash Speed	43 RPM	40 RPM	41 RPM	36 RPM	31 RPM
Distribution Speed	77 RPM	73 RPM	65 RPM	62 RPM	54 RPM
Medium Extract (G-Force)	325 (40 G's)	305 (40 G's)	280 (40 G's)	170 (18 G's)	140 (15 G's)
High 1 Extract / G-Force	475 / 85 G's	445 / 85 G's	410 / 86 G's	375 / 86 G's	340 / 87 G's
High 2 Extract / G-Force	610 / 140 G's	575 / 140 G's	525 / 140 G's	480 / 141 G's	435 / 142 G's
High 3 Extract / G-Force	960 / 345 G's	900 / 345 G's	825 / 348 G's	715 / 312 G's	650 / 318 G's
Electrical Specifications Circuit Breaker Requirements and Full Load Amperages*	208-240/60/1/15-13 amp 208-240/60/3/15-10 amp 380-415/50/3/15-4 amp 440-480/50/3/15-4 amp	208-240/60/1/25-18 amp 208-240/60/3/15-10 amp 380-415/50/3/15-6 amp 440-480/60/3/15-6 amp	208-240/60/3/40-24 amp 380-415/50/3/25-13 amp 440-480/60/3/25-13 amp	208-240/50-60/3/60-29 amp 380-415/50-60/3/30-15 amp 440-480/50-60/3/30-15 amp	200-240/50-60/3/70-56 amp 380-415/50-60/3/40-32 amp 440-480/50-60/3/40-28 amp
Door Opening Size (in./mm)	13.9" (354 mm)	16.25" (413 mm)	17.50" (445 mm)	23" (584 mm)	28.5" (724 mm)
Door Bottom to Floor (in./mm)	22" (559 mm)	23" (585 mm)	30" (765 mm)	28.25" (718 mm)	30.9" (784 mm)
Drain Connection Size (in./mm)	3" (76 mm)	3" (76 mm)	3" (76 mm)	4" (102 mm)	4" (102 mm)
Water Inlet Connection (in./mm)	2 ea.: 3/4" (19 mm)	2 ea.: 3/4" (19 mm)	2 ea.: 1" (25 mm)	2 ea.: 1-1/4" (35 mm)	2 ea.: 1-1/2" (38 mm)
Steam Inlet Connection	1/2" (DN 13)	1/2" (DN 13)	1/2" (DN 13)	3/4" (DN 20)	1" (DN 25)
Net Weight	1212 lb. (550 kg)	1600 lb. (726 kg)	3000 lb. (1362 kg)	4000 lb. (1818 kg)	8070 lb. (3661 kg)
Shipping Weight (Dom.) Shipping Weight (Exp.)	1260 lb. (572 kg) 1275 lb. (580 kg)	1650 lb. (749 kg) 1750 lb. (795 kg)	3100 lb. (1407 kg) 3200 lb. (1453 kg)	4200 lb. (1909 kg) 4500 lb. (2045 kg)	8270 lb. (3751 kg) 8500 lb. (3860 kg)
All Shipping Dimensions (approx.) (H x W x D) (in./mm)	62" x 38.3" x 44.25" (1575 x 973 x 1124)	65" x 44" x 48" (1651 x 1118 x 1219)	75" x 50" x 58" (1905 x 1270 x 1473)	80" x 83" x 78" (2032 x 2108 x 1981)	87.5" x 84" x 96.25" (2216 x 2134 x 2444)
Agency Approvals**	CE, ETL, ETLc	CE, ETL, ETLc	CE, ETL, ETLc	CE, ETL, ETLc	ETL pending

* Standard domestic voltage 208-240/60/3. Circuit breaker and amp draw data shown is for standard voltage models without auxiliary heat. Consult factory for other configurations. Manufacturer strongly recommends using a circuit breaker instead of fuses. Use 3-pole circuit breakers for 3-phase machines. Due to continuous product improvements, design and specifications subject to change without notice. The quality management systems at all Alliance Laundry Systems facilities have been awarded ISO 9001 certification.

** Agency approvals may vary depending on configuration. Consult factory for details.



AU01-205



Front View Rear View

Components

1. Supply Compartment*
2. Controls
3. Cold Water Inlet
4. Hot Water Inlet
5. Vacuum Breaker
6. Electrical Connection
7. Drain Outlet**
8. Extra/Reuse Drain Outlet** (optional)
9. Extra/Reuse Water Inlet (optional)

* 35-85 lb. model shown. Dispenser mounted on left side on 135 lb. model.

** Drain and Reuse Drain are reversed on UF135.

www.uniwash.com

Alliance Laundry Systems
Shepard Street, Ripon, WI 54971 Telephone: 1-800-587-5458

